

# CATALOGUE

## COLOR COLLECTION



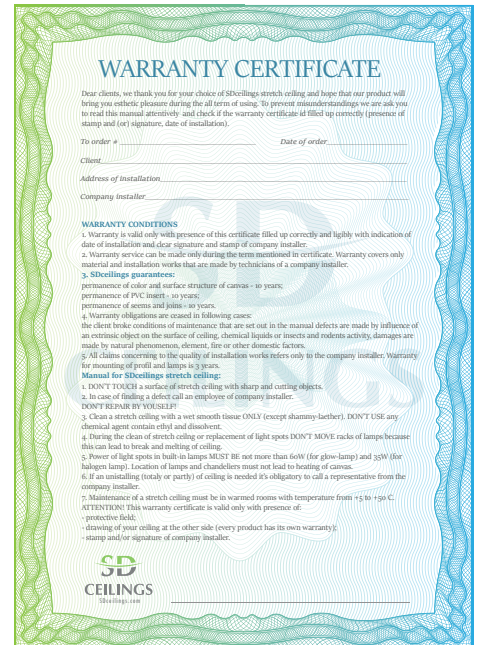
STRETCH CEILING  
SYSTEMS



**SD**  
CEILINGS

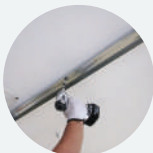
SDceilings propose stretch ceilings in a wide range of colors and textures. Texture glossy, matte, satin, transparent and metallic. All textures are suitable for printing pictures at our factory. Any design, picture or logo can be printed on the membrane. The ceilings are provided with a long guarantee (10 years). We also offer various lighting solutions and prefabricate metal structures for complex ceilings installation. SDceilings products are suitable for every room including rooms with high fire protection and environmental control requirements (i.e. nurseries, recreational and educational institutions).

- more than 180 colour shades and finishes
- any image can be printed into SDceilings
- three-dimensional and multilevel structures
- stretch ceilings with a starry sky effect
- perforated and acoustic ceilings
- moisture and dust repellent
- 10 year warranty
- safe, allergy-free and recyclable material

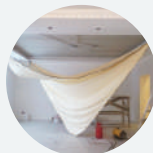


## INSTALLATION OF STRETCH CEILING

Installation the platform  
for spotlights  
**02**

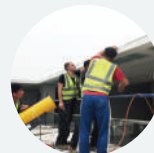


**01**  
Fixation the profile around  
the perimeter of the room



**03**  
Hanging the canvas evenly  
to the several points

Heating and stretching  
the ceiling  
**04**



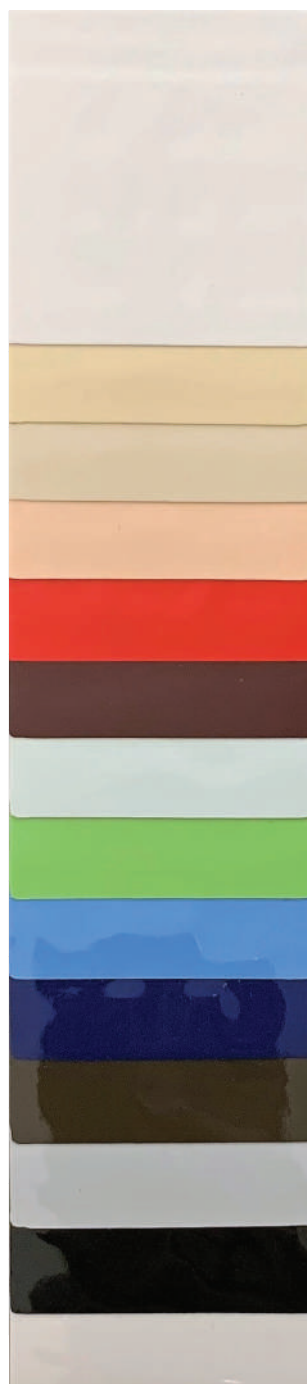
**05**  
Installation the lighting

The ceiling is ready  
**06**





## SUPER GLOSS 200CM



01001

01002

01003

01004

01005

01006

01007

01008

01009

01010

01011

01012

01013

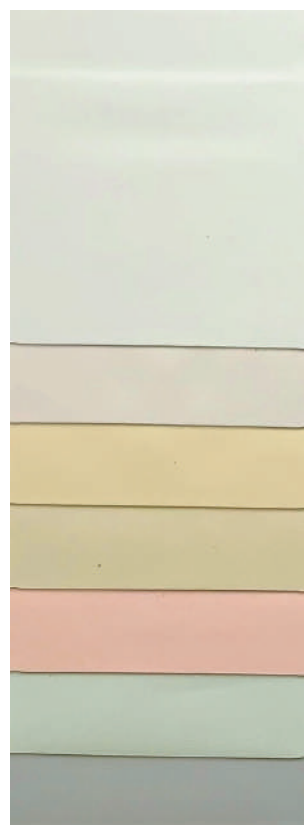
0048

## ACOUSTIC 200CM



M-Perf

## SUPER SATIN 200CM



02014

02016

02017

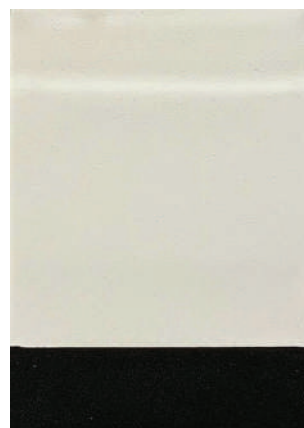
02018

02019

02020

0050

## SUPER MAT 200CM



04021

0046

## SUPER TRANSLUCENT 200CM



03015

# TRANSLUCENT



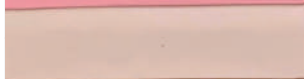
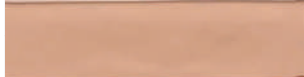
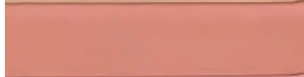

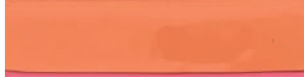
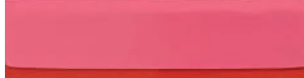



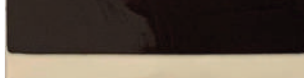

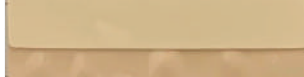









The translucent technology combines ceilings and lighting in one unit. Translucent fabrics transmit light, but remain sufficiently dense to hide communication elements of the main ceiling. Translucent film proportionally transmit light from the light sources so it gives the illusion that the ceiling surface is glowing itself. The most important advantage of this type of design will be the ability to construct a fully luminous surface. In this case, the whole ceiling will become one big lamp. In most cases, if white film is used, there is no need to install any additional lighting.

## GLOSS 320CM

	G 100
	G 110
	G 114
	G 120
	G 156
	G 160
	G 201
	G 223
	G 225
	G 227
	G 229
	G 235
	G 303
	G 305
	G 307
	G 313
	G 317
	G 319
	G 333
	G 347

## GLOSS 320CM

	G 400
	G 402
	G 404
	G 406
	G 408
	G 412
	G 424
	G 442
	G 462
	G 476
	G 478
	G 490
	G 501
	G 507
	G 511
	G 525
	G 555
	G 571
	G 573
	G 577
	G 604



# ART PRINTING



Manufacturing stretch ceilings with Art can be divided into the following stages:

1. Art for stretch ceilings you can choose any image from the following websites: **shutterstock.com** and **depositphotos.com**; and we will buy it for you! Or you can offer your image in a high quality.
2. Proceed to the selection of a suitable stretch fabric. The same image will look different on a matte, satin or glossy background.
3. The picture is increased and transferred to the canvas. Photo printing is carried out with non-toxic paints, resistant to high humidity, non-abrasion and non-fading.

## GLOSS 320CM



G 608

G 644

G 652

G 721

G 739

G 753

G 866

## SATIN 320CM



S 110

S 303

S 307

S 347

S 501

S 507

S 511

S 604

## MAT 320 CM



M 110

M 303

M 307

M 347

M 501

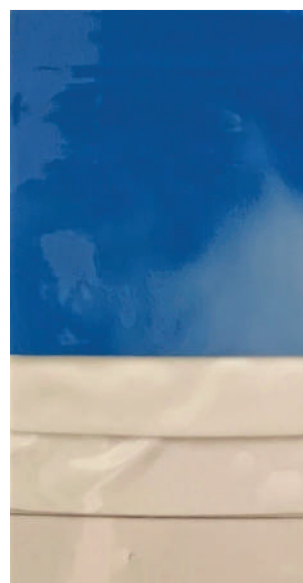
M 507

M 511

M 571

M 604

## TRANSLUCENT 320 - 500 CM



T-sky (320 cm)

T 303 (320-500cm)

TG 303 (320cm)

TP 303 (320cm)





A starry sky ceiling combines the stretch ceiling material and modern achievements of room lighting. A special projector is fixed behind the surface of the stretch ceiling. And it supplies voltage to the LED stripes. The stripes are output in special holes in the canvas. As a result, over your head you will have several dozens or hundreds of tiny lights which create the effect of the night sky. In addition to using fiberglass and a projector you can use photoprinting on stretch ceiling. Or a little bit more complicated variant which combines photoprinting and a projector with an optical fiber in one ceiling.



## LEAVES 320 CM



LV 303

LV 307

LV 501

LV 507

## BROCADE 320 CM



PL-3D 303

3D 303

3D 501

3D 347

## GALAXY 320 CM



GL 162

GL 180

GL 303

GL 347

GL 462

## MOSAIC 320CM



PL-MS 303

MS 303

MS 501

## METALLIC 320CM



ST 81

ST 87

M 904

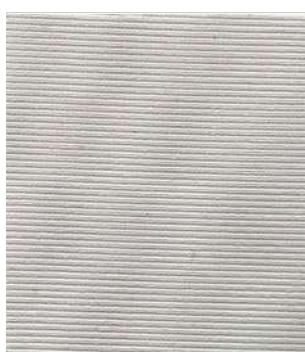
## SPRING 320CM



PL-SP 303

SP 303

## CLOTH 310, 350 410, 450, 505 CM



00950450

## EXCLUSIVE 320CM



Water

Thread

Clouds



You choose the shape of the future lamp, for example, a circle or a square. Then, according to this form and the given sizes, the skeleton from metal which is painted then in any color is created. This frame is attached to the ceiling, led strips are installed inside it so that uniform lighting is created, and then a translucent canvas is mounted. And the lamp is ready!



## GLOSS 500 CM



G 225

G 303

G 305

G 307

G 347

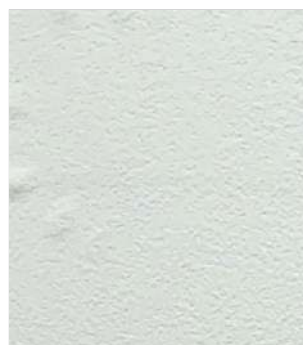
G 501

G 507

G 511

G 571

## MAT 500 CM



M 303

## MATTE 320 CM



MT 007-303

MT 010-303

MT 010 Gold

## SATIN 320CM



S 303

## SHELLS 320CM



PL-SH 303

SH 303

SH 307

SH 501

SH 507



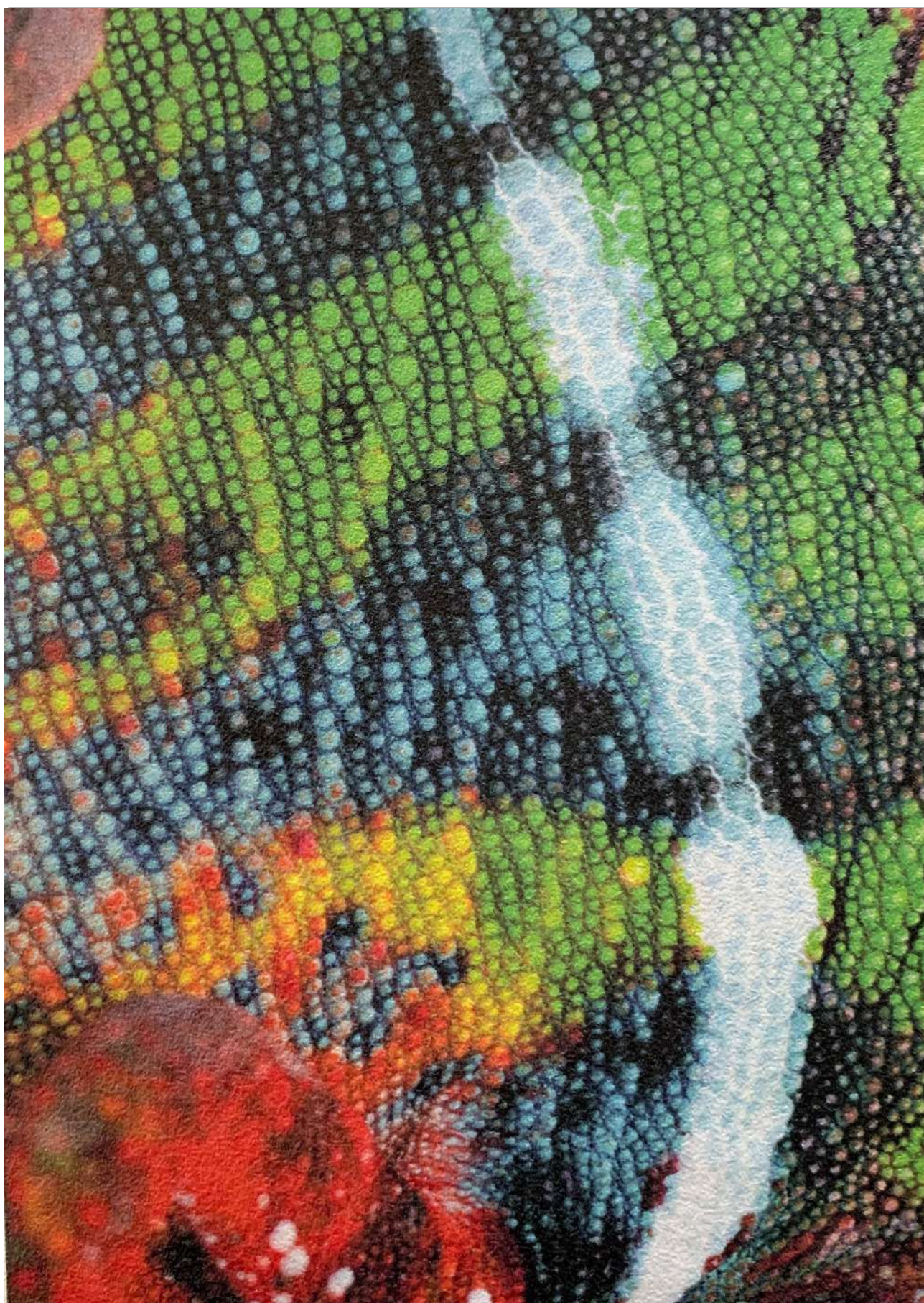
SD Stretch Ceilings are divided into three types according to the type of surface:

- matte, systems fit perfectly into any interior, imitating a perfectly plastered plane;
- glossy, have a wide range of colors and they can increase the space visually;
- satin — matte surface of the last kind of tension structures, satin, brought to shine by polishing.

Any existing defect, multi-level ceiling can securely hide from prying eyes. The combination of different color and texture of the canvases allows you to get very interesting results. Multi-level ceilings don't require a special approach to cleaning.

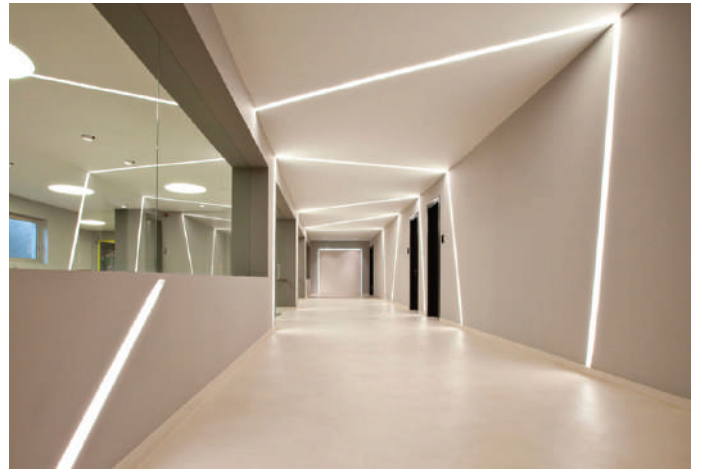


TEST PRINT



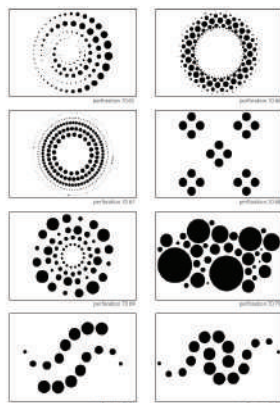


# LINEAR LIGHT



Light lines are the effect of a luminous flux floating in the air. They are able to take any shape depicted on the ceiling surface. The light source is led structures made by special technology. As a basis is the special wide aluminum profile inside which any led tape necessary for your room is placed is applied. The top profile is closed with a light-transmitting cover. On the sides of the stretched canvas. The whole system is on the same level, forming a single integral structure, as if everything is a single canvas. Stretch ceiling light lines are used to illuminate, decorate and improve visual perception, and are able to zone the room in functionality. Proper placement of lines helps to make adjustments and create a good impression of the features of the room and its volume, to focus on certain of the most striking objects of the interior and architectural ensemble.





The Art-perforated ceiling is decorative cut-outs on stretched canvas. The technology of Art-perforated stretch ceilings allows you to decorate the ceiling in a completely new way different from all previously existing ones. You can depict flowers, figures, butterflies, the lunar surface, different grids... anything. The Art-perforated ceiling implement an unusual project and composition; cut different sizes and shapes; create a multi-level unusual system with different colors and textures.



- UNIFORM LIGHT TRANSMISSION



- WATERPROOF, THE ABSENCE OF CONDENSATE



- QUICK & CLEAN INSTALLATION



- HIGH STRENGTH (100 KG/M<sup>2</sup>)



- SOUND ABSORBING, ACOUSTIC



- FIREPROOF

## CEILINGS

SUNTEX TRADING FZC  
UAE, DUBAI

PHONE: +971 56 462 4233

WHATSAPP: +971 56 462 4233

TEL/FAX +971 4 558 17 71

INFO@SDCEILINGS.COM

[WWW.SDCEILINGS.COM](http://WWW.SDCEILINGS.COM)

